

Ft. Lauderdale-Hollywood International

Prepared by:
Broward County Aviation

Second Quarter 2010
September 2010

Partnership for Quieter Skies Report



The *Partnership for Quieter Skies Report* provides an overview of progress of efforts to reduce the noise impacts of Fort Lauderdale - Hollywood International Airport (FLL). These efforts represent a partnership of several entities:

- **Broward County** owns and operates FLL, and is responsible for overseeing the airport's planning, development, and operation.
- The **Federal Aviation Administration (FAA)** is responsible for the efficient and safe navigation of aircraft. The FAA also oversees any federal actions at the airport, such as airport layout changes, installation of navigational aids, etc.
- **Air carriers** provide passenger and cargo service to and from FLL.
- **General aviation operators** operate in privately owned aircraft.

ELEMENTS OF THE PARTERSHIP FOR QUIETER SKIES PROGRAM

Broward County Aviation Department initiated this program in response to requests from the Board of County Commissioners for a more transparent reporting of objective information related to FLL's noise abatement efforts. The program includes the following elements, based on data collected by FLL's Airport Noise and Operations Monitoring System (ANOMS):

- **Fleet Noise Reports** summarize and compare the overall noisiness of the specific mix of aircraft types each airline operates at FLL.
- **High Noise Event Reports** compare the numbers of "high range" noise events created by major categories of aircraft operators at FLL
- **Runway Use Summary Reports** present graphical and tabular summaries of arrival and departure runway use at FLL.
- **Flight Track Density Plots** show the relative frequency that aircraft fly over geographic areas around FLL

FLEET NOISE REPORT

The Fleet Noise Report compares the noisiness of the specific fleet of aircraft that each airline operates at FLL, in relation to the current federal ("Stage 3") noise standards for airline jets, and also in relation to the fleets other airlines operate at FLL. The report lists the total jet operations at

FLL by carrier and a "Cumulative Below Stage 3 Limit" value for those operations. By focusing on the aircraft types that airlines actually use at FLL, rather than the airlines' overall fleets, it will assist individual airlines in making informed decisions regarding the aircraft models they schedule to fly into and out of FLL. This information will assist them to improve their overall Fleet Noise Score.

HIGH NOISE EVENT REPORTS

High Noise Event Reports for arrivals and departures summarize contributions major operator categories make to noise experienced in the FLL environs, by listing the number of aircraft noise measurements that exceed a Sound Exposure Level (SEL) of 85 dB (see definitions). 85 dB SEL is a significant threshold, because it is the level at which several adverse community impacts begin to be experienced

RUNWAY USE TRENDS

This report provides a tabular and graphical summary of overall runway use during the report period. These reports allow residents near the airport to understand, at a glance, the usage of runways that most affect them.

FLIGHT TRACK DENSITY PLOTS

Flight track density plots show the relative use of the airspace surrounding FLL. Color ranges are assigned based on the relative density of traffic (from low to high) for several categories:

- Air Carrier Jet Departures
- Air Carrier Jet Arrivals
- All Other Departures
- All Other Arrivals

DEFINITIONS

Decibel (dB): A logarithmic measurement of sound intensity.

Sound Exposure Level (SEL): A term used to describe the total sound energy from a single aircraft noise event. It takes into account both the noise level and the duration of the event.

Effective Perceived Noise Decibels (EPNdB): A noise metric FAA uses in setting noise standards that jet aircraft and larger propeller-driven aircraft must meet to operate in the U.S.

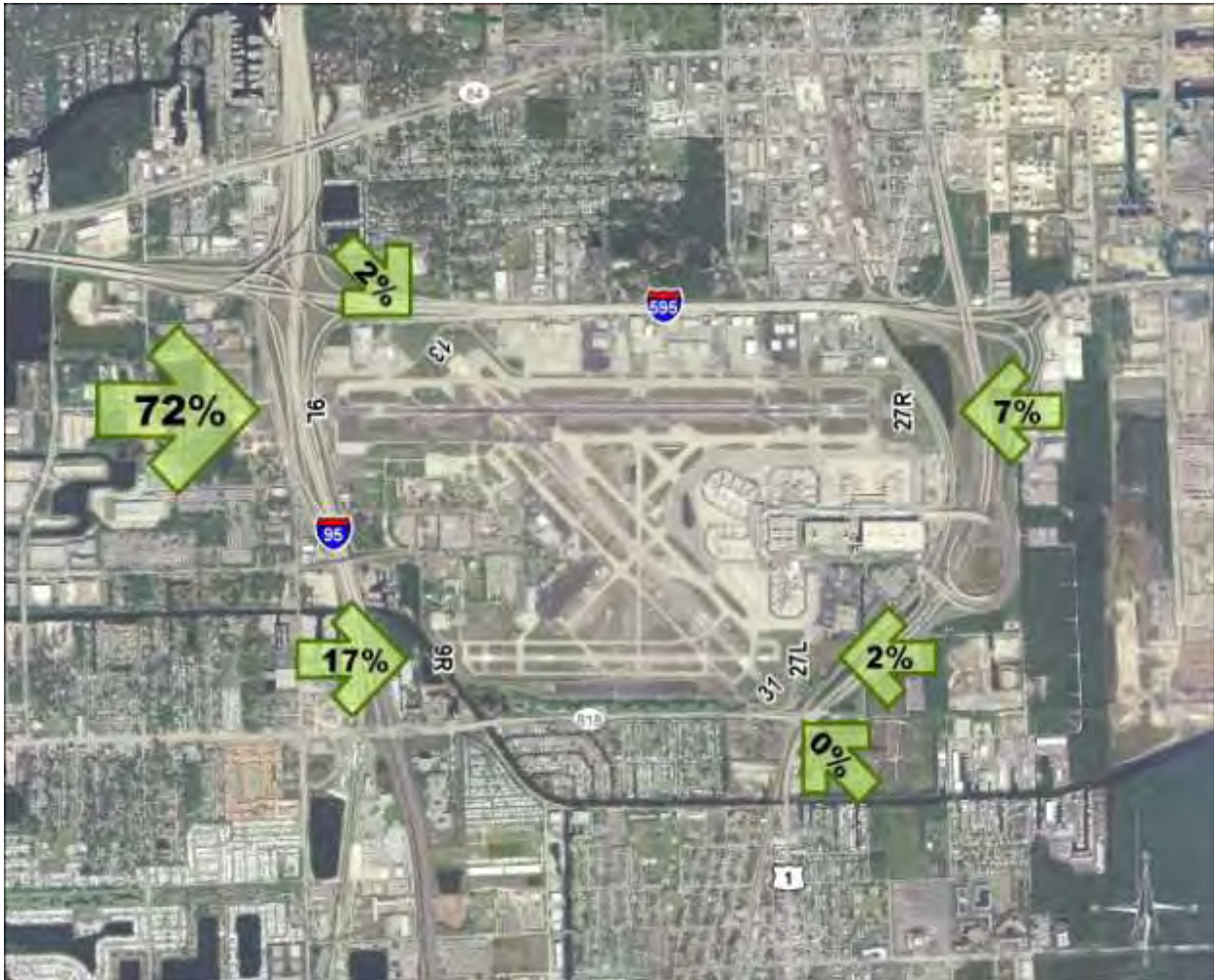
Fleet Noise Report

Average Decibels Above or Below Federal Noise Standard
Second Quarter 2010 (April 1 – June 30)

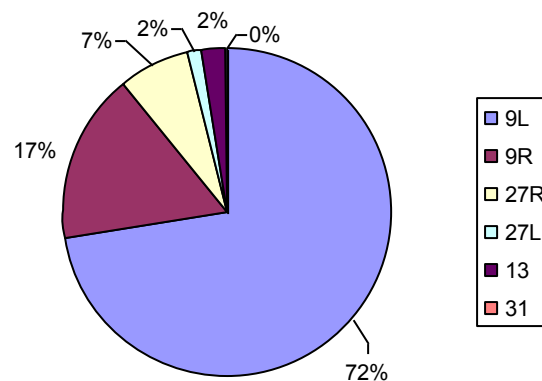
Airline	Total Jet Operations at FLL 4/1 - 6/30/10	Average Difference from Fed. Standard (Cum.EPNdB)	Below Federal Standard	Above Federal Standard
Major				
Airtran Airways Inc	2778	-18.9		
Frontier Airlines Inc	270	-17.2		
Spirit Airlines Inc	8230	-16.6		
Continental Air Lines Inc	2314	-16.4		
Southwest Airlines Co	8564	-15.9		
Virgin America Inc	702	-15.6		
Delta Air Lines Inc	5391	-14.3		
US Airways	3043	-13.2		
Jetblue Airways Corp	4940	-12.7		
American Airlines Inc	1520	-11.0		
Allegiant Air Inc	322	-7.0		
Bahamasair Holdings Ltd	471	-0.6		
Regional				
Comair Inc	19	-26.9		
International & Charter				
Atlantic Southeast Airlines	165	-26.9		
Sun Country Airlines	4	-16.3		
Canjet Airlines	95	-16.3		
Sunwing Airlines Inc	37	-16.3		
Westjet Airlines Ltd	440	-16.3		
Bwia West Indies Airways Limited	174	-16.3		
Avianca	178	-14.8		
Miami Air International Inc	33	-14.0		
Air Jamaica	660	-13.5		
Vision Airlines Inc	15	-13.1		
Air Canada	695	-12.9		
Air Transat	44	-10.0		
Condor Flugdienst GmbH	26	-9.2		
Sky King Inc	8	-0.6		
Cargo				
United Parcel Service Co	174	-19.5		
Federal Express Corporation	470	-8.6		
Capital Cargo International Airlines	94	-2.2		

Runway Use Summary Report

Arrivals Runway Use for All Aircraft Types
Second Quarter 2010 (April 1 – June 30)



Runway	Arrivals
9L - North Runway, east flow	23453
9R - South runway, east flow	5449
27R -North runway, west flow	2245
27L - South runway, west flow	497
13 - Diagonal runway, south flow	767
31 - Diagonal runway, north flow	15

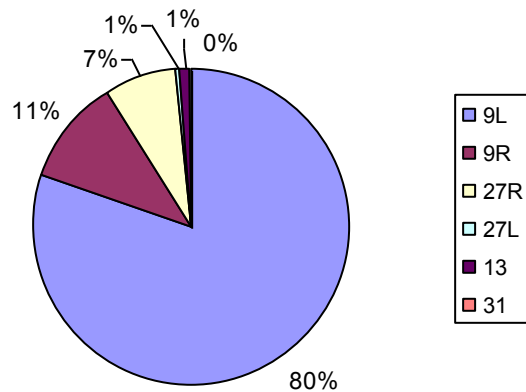


Runway Use Summary Report

Departures Runway Use for All Aircraft Types
Second Quarter 2010 (April 1 – June 30)



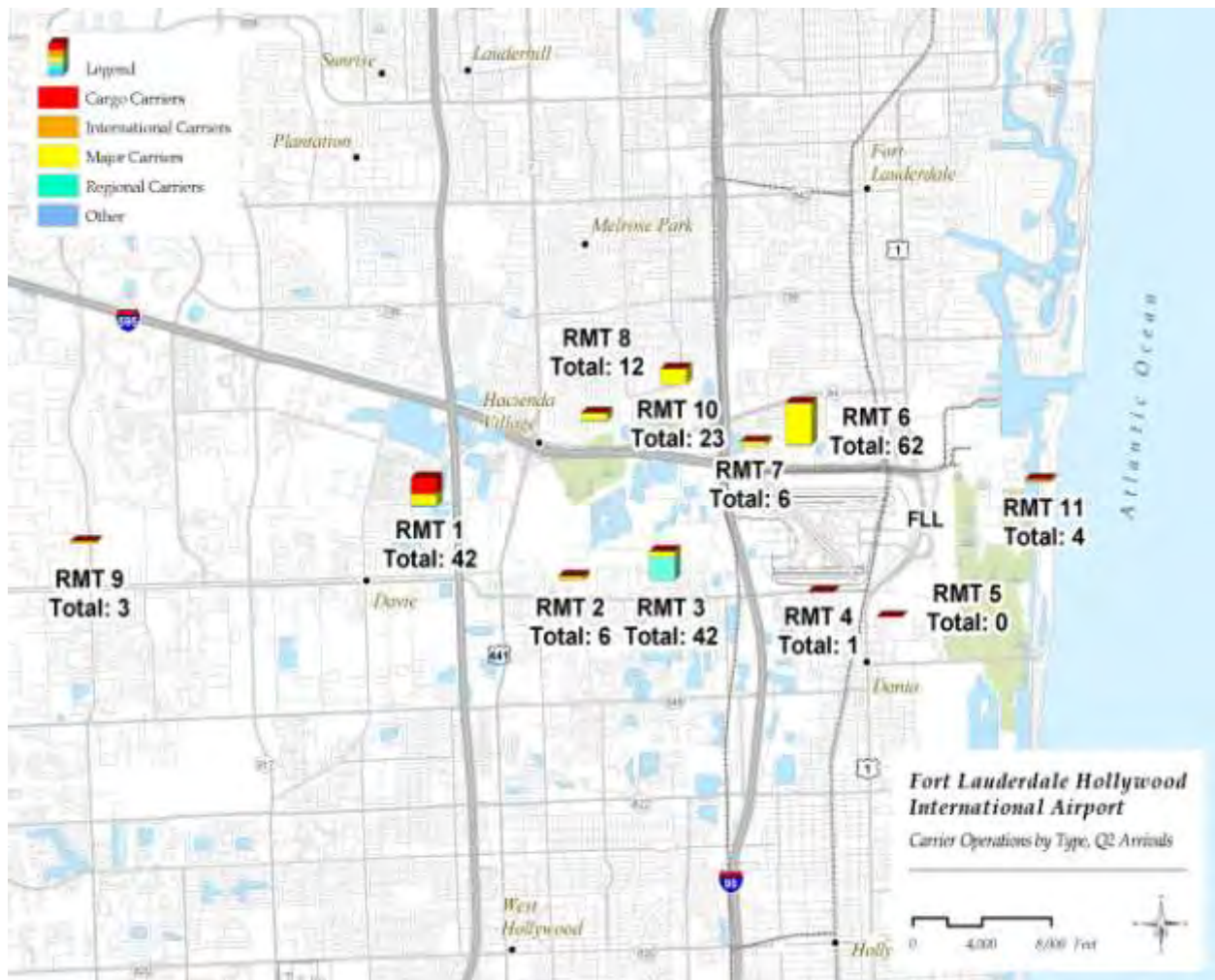
Runway	Departures
9L - North runway, east flow	13818
9R - South runway, east flow	1806
27R - North runway, west flow	17322
27L - South runway, west flow	1955
13 - Diagonal runway, south flow	9
31 - Diagonal runway, north flow	53



High Noise Events- Arrivals

For Monitor Locations 1-11

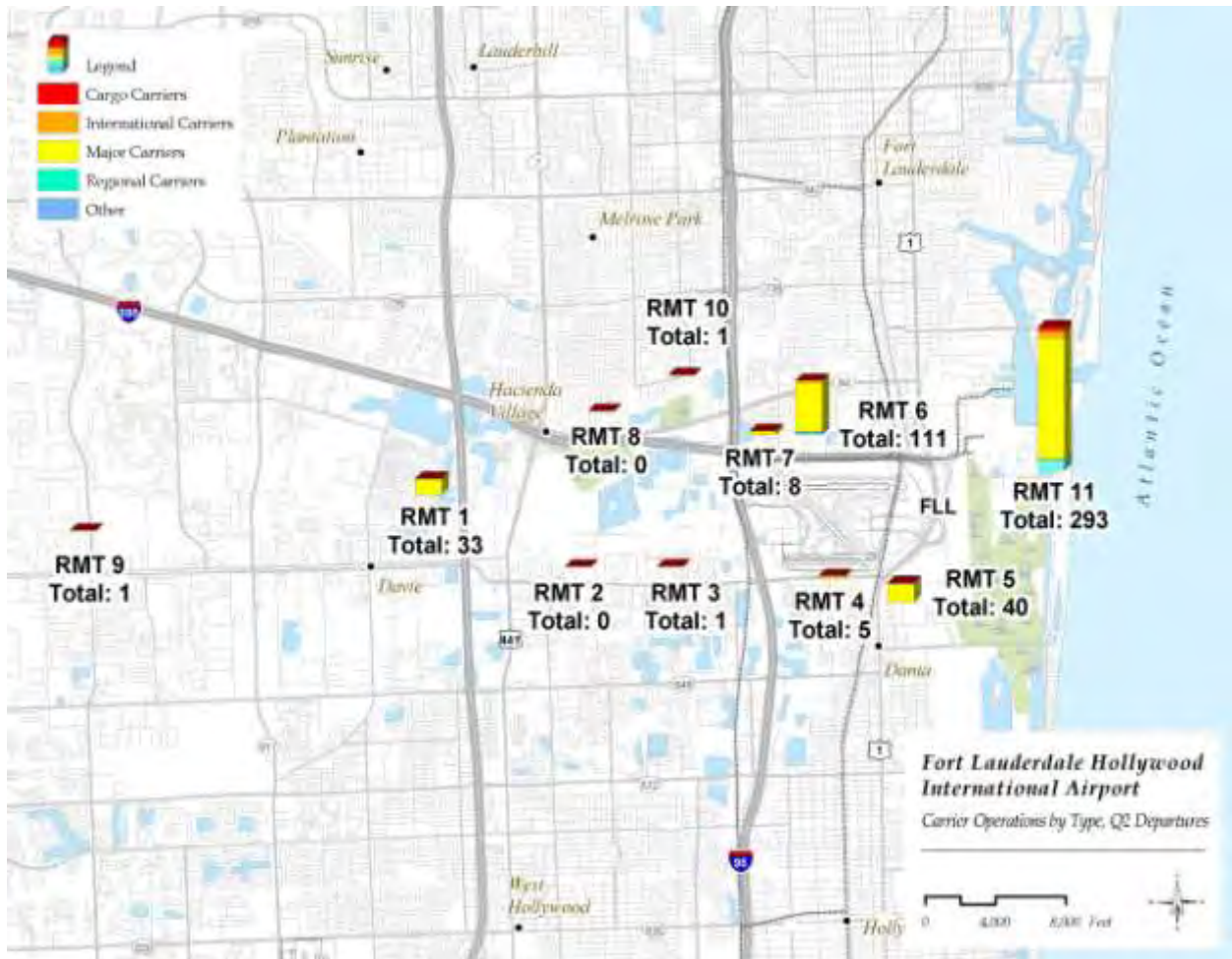
Second Quarter 2010 (April 1 – June 30)



High Noise Events- Departures

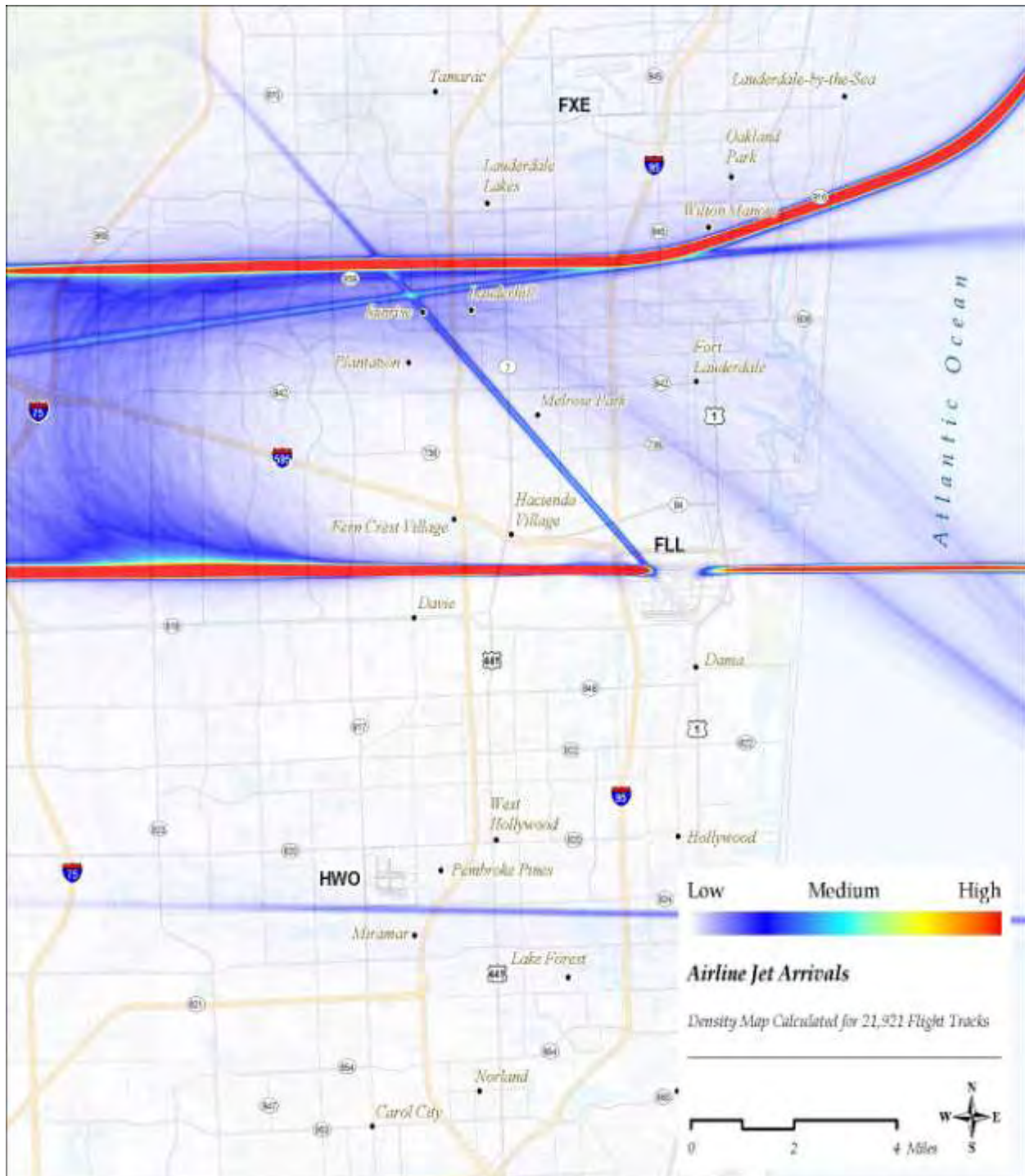
For Monitor Locations 1-11

Second Quarter 2010 (April 1 – June 30)



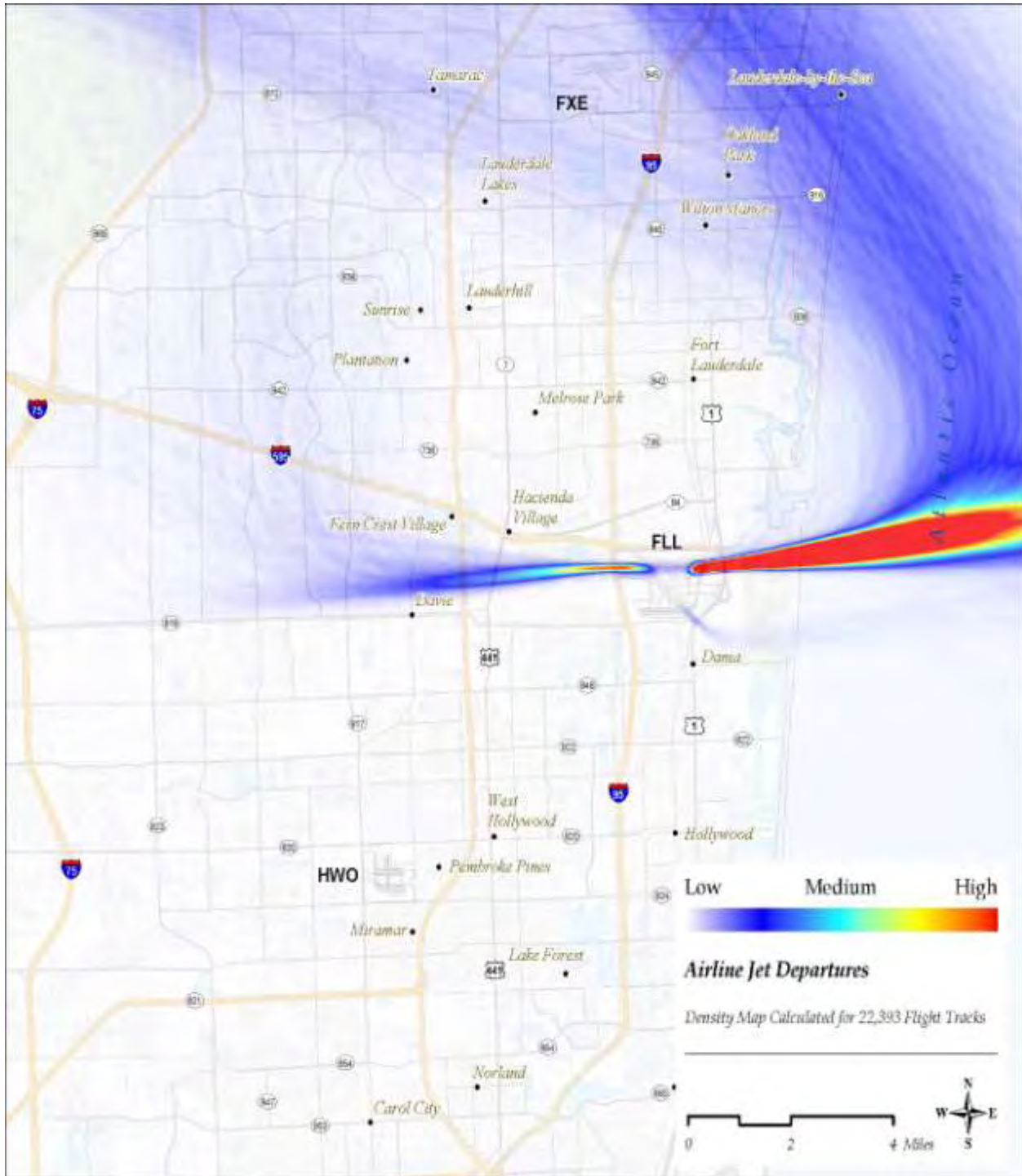
Relative Airspace Density

For All Scheduled Passenger and Cargo Jet Arrivals
Second Quarter 2010 (April 1 – June 30)



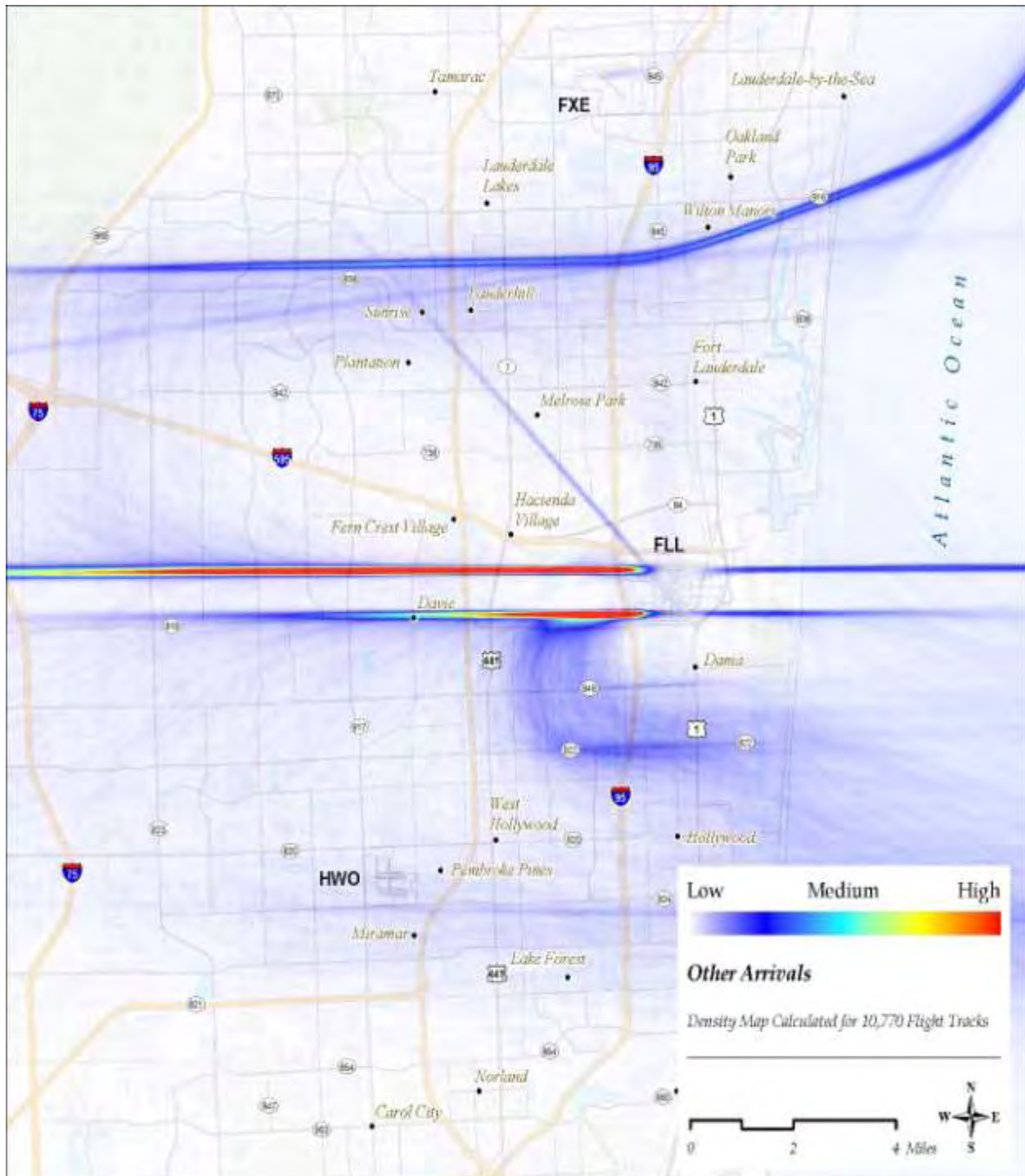
Relative Airspace Density

For All Scheduled Passenger and Cargo Jet Departures
Second Quarter 2010 (April 1 – June 30)



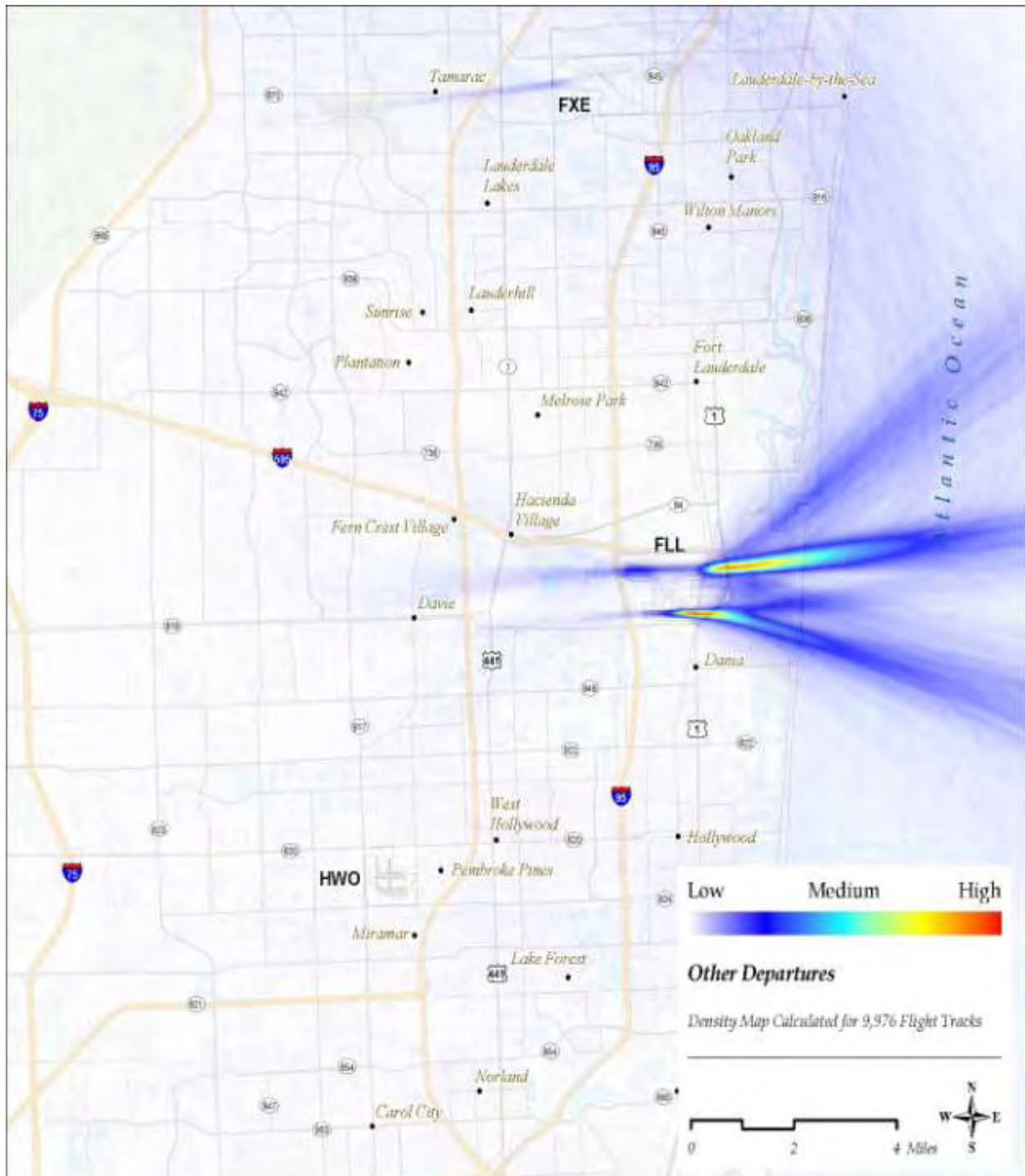
Relative Airspace Density

For All Propeller and Non-Scheduled Jet Arrivals
Second Quarter 2010 (April 1 – June 30)



Relative Airspace Density

For All Propeller and Non-Scheduled Jet Departures
Second Quarter 2010 (April 1 – June 30)





COMMUNITY OUTREACH

Fort Lauderdale-Hollywood International Airport's Community Outreach Office provides area residents with information about the airport and its related projects. Residents can contact the Community Outreach Office with their questions.

To receive e-mail notices about future meetings or updates on these projects, send your name and email address to asiegel@broward.org, or call 954-359-6977.

550 Northwest 10th Street
Dania Beach, FL 33004
Phone: 954-359-6977
Fax: 954-926-5159
Office Hours:
8:30 a.m. to 5 p.m. Monday-Friday