

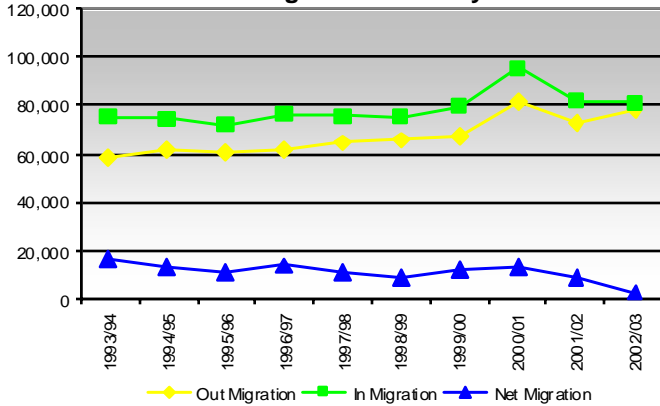
Net Migration

Since the 2000 Census, there has been continued population growth in Broward County attributable to net migration both domestic and international. Between 2000 and 2003, some 259,000 persons moved into Broward County from other places in the U.S. while 233,000 moved out. As a result, the number of residents in Broward grew by 26,000 due to net domestic migration. Over the past decade, net domestic migration has slowly decreased, although the total numbers of both in-and out-migrants have increased. In 2002/03, domestic in-and out-migrants were almost equal, resulting in a low level of net domestic migration.

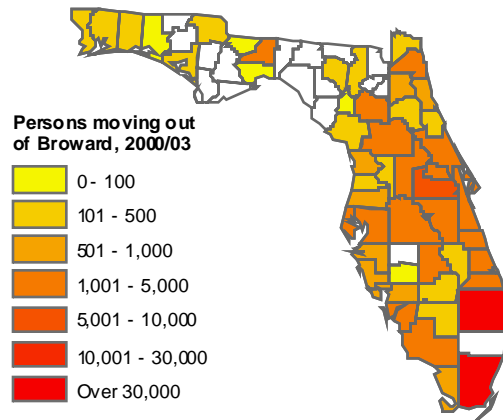
Migration between Broward and Florida Counties

Typically, more people make short-distance moves than long-distance migrations. Therefore, it is to be expected that the tri-county area would provide most in-migrants. In 2002/03, 28,561 people moved to Broward County from Miami-Dade County, representing 35% of domestic in-migrants. This proportion has *almost doubled* during the past 20years, from 19% in 1984. Palm Beach County accounted for 9% of domestic in-migrants in 2002/03, and remained the second most common county of origin. Conversely, during the same year, 8,425 people moved from Broward to Palm Beach, making it the most common destination for domestic out-migrants.

Domestic Migration over 10 years



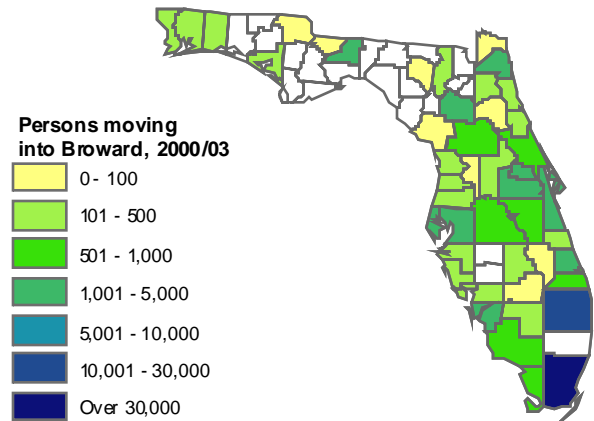
Out-Migration from Broward to other Florida Counties



Gross Migration

In 2002/03, more than 159,000 people moved into and out of Broward County, indicating that Broward's population continues to be highly mobile.

In-migration from other Florida Counties to Broward



In-Migration from other States

Beyond the tri-county area, Broward County has historically attracted migrants, especially retirees, from the Northeast, especially New York and New Jersey, and from the Chicago metropolitan area. In 2002/03, more than half the domestic in-migrants came from the top ten counties listed below.

Rank	County	Persons moving to Broward annually
1.	Miami-Dade, FL	28,561
2.	Palm Beach, FL	7,409
3.	Queens, NY	1,870
4.	Kings, NY	1,404
5.	Orange, FL	1,380
6.	Nassau, NY	945
7.	Cook, IL	910
8.	Hillsborough, FL	897
9.	Bronx, NY	828
10.	Suffolk, NY	738

Source: IRS County to County Migration Flows, 2000/01–2002/03.

Source: IRS, 2002/03

Broward-by-the-Numbers is a publication from

Office of Urban Planning and Redevelopment
Planning Services Division
 115 South Andrews Ave., Room 329K
 Fort Lauderdale, FL 33301

phone: (954) 357-6634
 email: planstats@broward.org
www.broward.org/urbanplanning.htm



Broward County Board of County Commissioners

- Josephus Eggleston, Jr.
- Ben Graber
- Sue Gunzburger
- Kristin D. Jacobs
- Ilene Lieberman
- Lori Nance Parrish
- John E. Rodstrom, Jr.
- James A. Scott
- Diana Wasseman-Rubin

TECHNICAL APPENDIX

The principal data source for domestic migration is the annual **IRS County-to-County Migration Flow Data** series, which is derived from matching social security numbers and addresses shown on annual income tax returns. Data includes total returns filed, which approximates total households, and total exemptions filed on each return, which approximates total population. Coverage includes 95-98% of all tax returns filed. However, the data series excludes persons that do not file returns (due to very low income, income from non-taxed retirement plans, recent international immigration, Puerto Rico citizenship, illegal alien migration, etc.). The data shows in-migrants and out-migrants by counties of origin and destination within the fifty states, but does not include any demographic characteristics (such as age, race etc).

TABLE 1: NET DOMESTIC MIGRATION TO/FROM BROWARD COUNTY, DERIVED FROM TOTAL EXEMPTIONS FILED ON FEDERAL INCOME TAX RETURNS, 1993/94 TO 2002/03

TOTAL EXEMPTIONS	1993/94	1994/95	1995/96	1996/97	1997/98	1998/99	1999/00	2000/01	2001/02	2002/03
Non Migrants										
Non-Migrants	945,778	962,517	986,619	1,018,632	1,045,942	1,074,648	1,106,576	1,126,662	1,173,035	1,196,800
Domestic Out-Migration										
US Domestic OUT	58,691	61,264	61,206	62,054	64,527	66,097	67,039	82,044	72,662	77,957
Florida Counties OUT	31,968	32,388	32,245	33,942	34,838	36,236	37,343	46,447	42,768	48,090
Other US OUT	26,723	28,876	28,961	28,112	29,689	29,861	29,696	35,597	29,894	29,867
Domestic In-Migration										
US Domestic IN	75,028	74,514	72,207	76,166	75,770	75,331	79,469	95,474	81,998	81,177
Florida Counties IN	37,859	38,022	37,701	39,697	39,624	40,765	43,708	49,990	43,854	44,693
Other US IN	37,169	36,492	34,506	36,469	36,146	34,566	35,761	45,484	38,144	36,484
Net Migration										
US Domestic NET	16,337	13,250	11,001	14,112	11,243	9,234	12,430	13,430	9,336	3,220
Florida Counties NET	5,891	5,634	5,456	5,755	4,786	4,529	6,365	3,543	1,086	-3,397
Other US NET	10,446	7,616	5,545	8,357	6,457	4,705	6,065	9,887	8,250	6,617
Gross Migration										
Gross Domestic Migration	133,719	135,778	133,413	138,220	140,297	141,428	146,508	177,518	154,660	159,134

Source: IRS County to County Migration Flows.

TABLE 2: DOMESTIC MIGRATION IN BROWARD COUNTY, SINCE 2000

Year	In-Migration	Out-Migration	Domestic Migration Net Migration	Gross Migration
2000/01	95,474	82,044	13,430	177,518
2001/02	81,998	72,662	9,336	154,660
2002/03	81,177	77,957	3,220	159,134
3 year total	258,649	232,663	25,986	491,312

Source: IRS County to County Migration Flows.

TABLE 3: DOMESTIC MIGRATION TO/FROM BROWARD COUNTY BY STATE, 2000/01 TO 2002/03

STATE	DOMESTIC IN-MIGRATION			DOMESTIC OUT-MIGRATION			NET MIGRATION SINCE 2000
	2000/01	2001/02	2002/03	2000/01	2001/02	2002/03	
AK	36	23	19	0	34	38	6
AL	314	162	252	305	321	302	-200
AR	48	55	54	59	69	54	-25
AZ	421	330	432	628	439	534	-418
CA	2,399	2,257	2,058	2,222	1,783	1,738	971
CO	544	462	426	610	475	406	-59
CT	1,178	962	911	757	664	612	1,018
DC	130	141	108	141	87	96	55
DE	176	145	124	94	61	144	146
FL*	49,990	43,854	44,693	46,447	42,768	48,090	1,232
GA	2,227	1,903	1,621	3,446	2,685	2,704	-3,084
HI	144	70	100	90	85	65	74
IA	79	25	29	42	34	20	37
ID	0	0	19	0	0	0	19
IL	1,878	1,414	1,454	1,026	805	844	2,071
IN	388	216	210	299	194	163	158
KS	218	141	79	168	80	107	83
KY	356	205	172	214	175	191	153
LA	282	281	230	192	173	211	217
MA	2,057	1,767	1,641	1,272	962	1,004	2,227
MD	1,258	896	838	861	605	770	756
ME	77	104	83	90	48	43	83
MI	912	725	667	636	533	437	698
MN	289	249	204	198	128	113	303
MO	341	241	255	252	165	193	227
MS	111	0	42	55	94	46	-42
MT	0	0	0	0	0	0	0
NC	1,200	893	935	2,088	1,668	1,432	-2,160
ND	0	0	0	0	0	0	0
NE	56	46	45	29	39	38	41
NH	245	162	139	193	157	145	51
NJ	3,996	3,354	3,242	1,834	1,607	1,624	5,527
NM	50	58	47	63	76	28	-12
NV	293	258	245	459	368	370	-401
NY	9,567	8,622	8,275	3,650	3,263	3,405	16,146
OH	1,341	978	819	849	715	608	966
OK	179	92	85	126	96	75	59
OR	89	75	61	93	79	93	-40
PA	1,681	1,319	1,375	1,276	1,075	980	1,044
RI	354	305	203	252	233	174	203
SC	550	307	382	656	546	455	-418
SD	0	0	0	0	0	0	0
TN	529	393	366	797	608	700	-817
TX	1,951	1,457	1,657	1,847	1,601	1,623	-6
UT	124	99	87	58	37	35	180
VA	1,242	1,069	1,021	1,224	863	1,208	37
VT	18	30	26	21	21	16	16
WA	420	305	239	278	251	276	159
WI	204	171	154	136	109	111	173
WV	30	13	27	24	21	0	25
WY	0	0	0	0	0	0	0
Other**	5,502	5,364	5,026	5,987	5,762	5,636	-1,493
TOTAL	95,474	81,998	81,177	82,044	72,662	77,957	25,986

* Aggregated data listed as Florida and Same State with suppressed county name.

** County of origin had fewer than 10 migrants and therefore state was suppressed.

Source: IRS County to County Migration Flows, 2000/01 – 2002/03

TABLE 4: INTRA-STATE DOMESTIC MIGRATION TO/FROM BROWARD COUNTY, 2000/01 TO 2002/03

STATE	DOMESTIC IN-MIGRATION			DOMESTIC OUT-MIGRATION			NET MIGRATION SINCE 2000
	2000/01	2001/02	2002/03	2000/01	2001/02	2002/03	
Miami Dade County	31,232	27,867	28,561	13,143	12,494	13,886	48,137
Monroe County	396	311	269	305	274	319	78
Escambia County	119	123	104	117	111	109	9
Bay County	66	51	59	73	67	59	-23
Santa Rosa County	48	37	44	40	53	59	-23
Leon County	452	399	392	469	411	419	-56
Hendry County	69	63	57	91	86	72	-60
Alachua County	461	415	354	485	390	429	-74
Nassau County	14	0	21	41	38	49	-93
Okaloosa County	86	51	59	109	70	131	-114
Glades County	0	12	30	55	53	52	-118
Putnam County	24	19	0	58	50	60	-125
Okeechobee County	45	15	29	97	82	65	-155
Pinellas County	739	481	484	718	602	552	-168
Suwannee County	16	15	21	83	79	81	-191
Sumter County	22	0	0	58	100	72	-208
Columbia County	49	38	45	142	90	140	-240
Manatee County	169	127	160	240	221	243	-248
Levy County	18	23	22	87	56	108	-251
Hernando County	51	62	57	156	134	141	-261
Charlotte County	119	96	78	188	166	242	-303
Flagler County	39	47	46	134	165	195	-362
Sarasota County	205	139	153	279	306	276	-364
Clay County	82	61	63	211	177	208	-390
Pasco County	174	139	129	260	279	303	-400
St Johns County	93	62	84	230	194	220	-405
Citrus County	33	55	45	211	169	162	-409
Duval County	703	559	418	714	690	775	-499
Osceola County	199	202	157	405	351	452	-650
Seminole County	493	378	390	706	673	562	-680
Highlands County	104	99	94	371	314	334	-722
Polk County	222	216	252	495	423	519	-747
Indian River County	140	68	96	414	331	362	-803
Volusia County	363	301	295	722	499	626	-888
Collier County	310	289	292	620	554	665	-948
Lake County	135	135	72	511	430	528	-1,127
Hillsborough County	997	799	897	1,432	1,159	1,387	-1,285
Martin County	217	152	177	622	551	686	-1,313
Marion County	184	163	158	714	593	690	-1,492
Lee County	457	423	403	931	811	1,067	-1,526
Orange County	1,399	1,144	1,380	1,878	1,639	1,964	-1,558
Brevard County	516	405	368	1,027	901	1,080	-1,719
St Lucie County	365	347	338	1,195	1,195	1,801	-3,141
Palm Beach County	8,227	7,329	7,409	15,306	14,467	15,668	-22,476

* Excludes counties with gross migration of fewer than 150 persons in 3 years.

NOTE: Columns do not total to state total due to data suppression where counties had fewer than 10 migrants.

Source: IRS County to County Migration Flows, 2000/01 – 2002/03

TABLE 5: PLACE OF RESIDENCY FOR BROWARD COUNTY RESIDENTS 1995 TO 2000

Place of Residency in 1995	Broward County Residents in 2000	Migrants
Nonmigrants:	1,129,767	
Same house in Broward	716,810	
Different house in Broward	412,957	
Domestic migrants:	297,859	76.2%
Different county in Florida	137,382	35.1%
Different state:		
Northeast	82,734	21.2%
Midwest	23,497	6.0%
South	35,811	9.2%
West	18,435	4.7%
International Migrants:	93,216	23.8%
Puerto Rico *	5,170	1.3%
U.S. Island Areas*	1,295	0.3%
Foreign country or at sea	86,751	22.2%
Total Migrants	391,075	100.0%
Total Population (aged 5+)	1,520,842	

* Defined as international for the purpose of this analysis (because the IRS data set only includes data for residents of the 50 states and District of Columbia).

Source: Census 2000 Summary File 3 (SF 3) – Table P24.