

BROWARD-by-the-NUMBERS

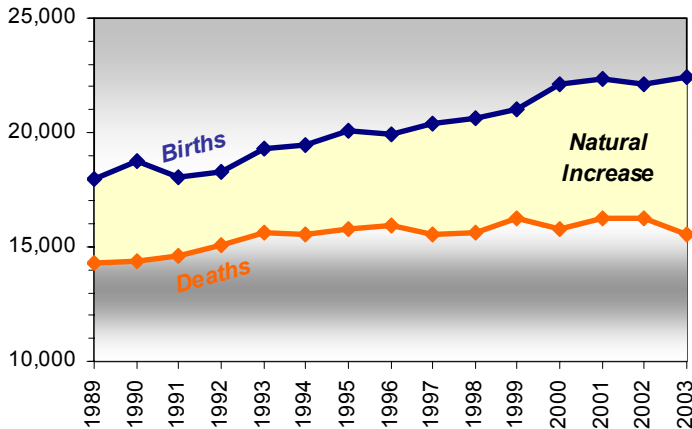
Births in Broward

Since 2000, there have been almost 89,000 births in Broward County, despite a fall in the birth rate. Maternal age has steadily increased, while the proportion of births to teens has dropped.

Births in Broward

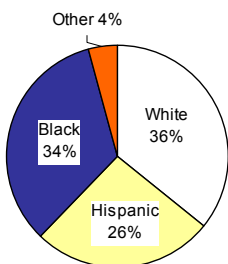
Over the past 15 years the annual number of births in Broward has risen steadily, from 17,930 in 1989 to 22,448 in 2003. This trend can be attributed to the increased number of young families living in Broward. Since the last Census, in 2000, there have been almost 89,000 births and 25,000 deaths in Broward County, resulting in a net increase of almost 64,000 residents. This population growth is called “natural increase.” Over time, natural increase is projected to become the driving force in population growth in Broward, overtaking net migration in the mid-2020s.

Natural Increase, 1989-2003

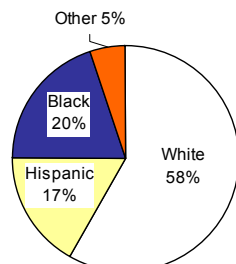


Pregnant women are more racially diverse than the population as a whole: 34% of births were to Black Non-Hispanic women, whereas only 20% of Broward County’s population is Black Non-Hispanic.

Race of Mothers in 2003



Race of All Residents



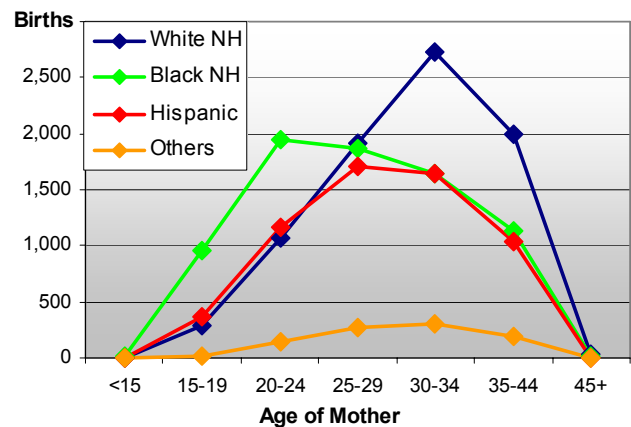
Birth and Fertility Rates

Following national trends, between 1990 and 2000 the Broward County birth rate, which compared total births to total population, fell 9 percent, from 14.9 births per 1,000 residents to 13.6. Similarly, the fertility rate, which takes account of the age-sex distribution of the County’s population, fell from 69.1 to 63.4 births per 1,000 women of childbearing age.

	1970	1980	1990	2000
Total Population	620,059	1,018,200	1,255,488	1,623,018
Women Aged 15-44	111,448	203,147	271,260	346,652
Total Births	9,643	11,518	18,738	22,080
Crude Birth Rate (births per 1,000 total population):				
	15.6	11.3	14.9	13.6
Fertility Rate (births per 1,000 women aged 15-44)				
	86.5	56.7	69.1	63.7

Fertility varies significantly by age, race and ethnicity. Overall in 2003, women aged 30-34 had the highest number of births. However, White Non-Hispanic mothers were typically older than Black or Hispanic mothers.

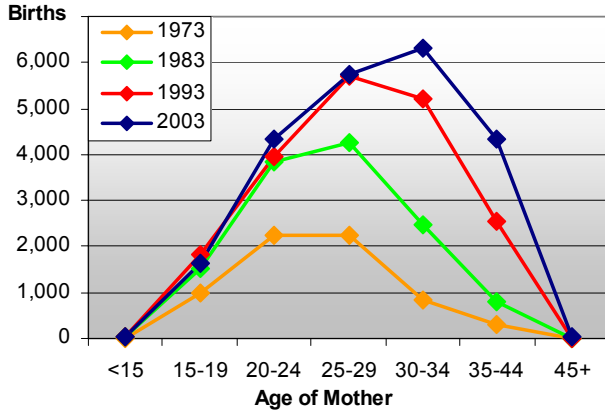
Births by Maternal Age and Race, 2003



Historic Trends

Since the 1970s, the age of mothers in Broward County has steadily increased as more women delay childbirth beyond age 30. Additionally, the population aged 30+ has increased.

Annual Births by Maternal Age, 1973-2003



Births to Teens

In 2003, more than 500 births in Broward County were to girls under 18. In raw numbers, births to teen mothers have increased, however, the proportion has dropped steadily from 5.4% of all births in 1973 to only 2.2% in 2003.

Year	Births by Age of Mother			Percent of Births to Mothers Under 18
	Under 15 years	15-17 years	Total Under 18	
1973	7	349	356	5.4%
1983	36	544	580	4.5%
1993	56	754	810	4.2%
2003	26	475	501	2.2%

Infant Mortality

Typically the number of infant deaths (under age one) exceeds total deaths among children aged one to 17. Nationally and locally, there is significant racial disparity in infant mortality rates.

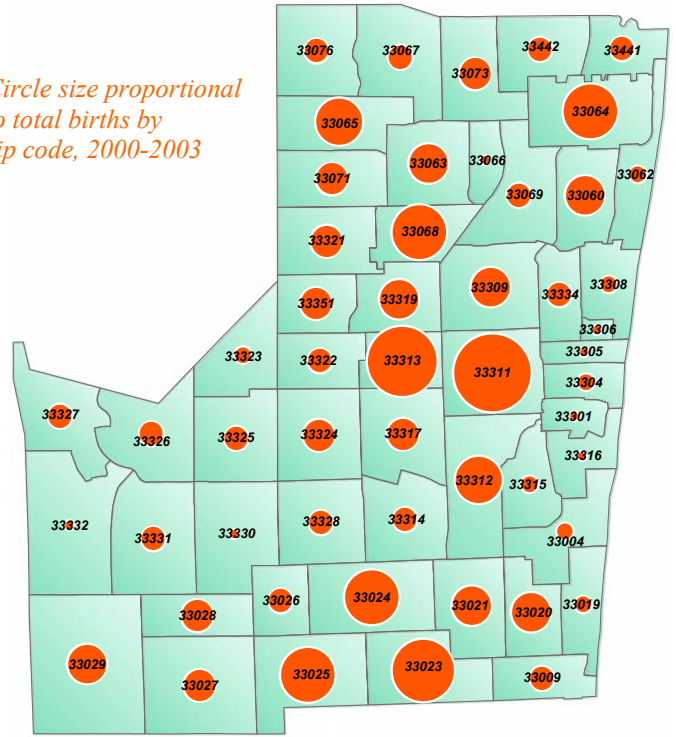
Race	Infant Deaths, 2003	Infant Mortality Rate*
White-NH	32	4.0
Hispanic	23	3.9
Black-NH	79	10.4
Other-NH	7	7.6
TOTAL	141	6.3

* Deaths of infants under age 12 months per 1,000 births

Distribution of Births in Broward

Total births by zip code, since 2000, range from 117 in 33306 to 4,939 in 33311. Between 2000 and 2003, the highest number of births occurred in central and south county zip codes, corresponding with the location of younger families. Coastal zip codes, which typically have older populations, had the lowest number of births.

Circle size proportional to total births by zip code, 2000-2003



SOURCE:

All data used in this report is published by the Office of Vital Statistics, Florida Department of Health, unless otherwise noted.

Broward-by-the-Numbers is a publication from

Dept. of Urban Planning and Redevelopment
Planning Services Division
 115 South Andrews Ave., Room 329K
 Fort Lauderdale, FL 33301

phone: (954) 357-6634
 email: planstats@broward.org
www.broward.org/urbanplanning.htm



Broward County Board of County Commissioners

- Josephus Eggleton, Jr.
- Ben Graber
- Sue Gunzburger
- Kristin D. Jacobs
- Ilene Lieberman
- Lori Nance Parrish
- John E. Rodstrom, Jr.
- James A. Scott
- Diana Wasserman-Rubin

TECHNICAL APPENDIX

TABLE 1 – Broward County Resident Births, Deaths and Natural Increase, 1989-2003

Year	Resident Live Births	Resident Deaths	Natural Increase
1989	17,930	14,314	3,616
1990	18,738	14,352	4,386
1991	18,033	14,586	3,447
1992	18,317	15,071	3,246
1993	19,312	15,628	3,684
1994	19,488	15,519	3,969
1995	20,059	15,804	4,255
1996	19,927	15,921	4,006
1997	20,417	15,579	4,838
1998	20,647	15,633	5,014
1999	21,033	16,215	4,818
2000	22,080	15,781	6,299
2001	22,310	16,226	6,084
2002	22,103	16,255	5,848
2003	22,448	15,565	6,883

Source: Office of Vital Statistics, Florida Department of Health

TABLE 2 – Broward County Fertility Rates by Age and Race, 2000

Age	White Non-Hispanic	Black Non-Hispanic	Hispanic	Other Races Non-Hispanic	Total All Races
Live Births by Maternal Race:					
15-19	366	1,068	385	31	1,850
20-24	1,202	2,053	989	76	4,320
25-29	2,386	1,782	1,343	223	5,734
30-34	2,914	1,443	1,345	240	5,942
35-44	2,077	1,042	872	142	4,133
Subtotal	8,945	7,388	4,934	712	21,979
TOTAL*	8,979	7,436	4,953	712	22,080
Females by Race:					
15-19	19,804	14,397	9,302	3,072	46,575
20-24	17,603	12,206	9,375	2,940	42,124
25-29	25,139	13,635	11,890	3,670	54,334
30-34	31,417	14,715	13,696	3,855	63,683
35-44	74,871	30,360	26,691	8,014	139,936
TOTAL	168,834	85,313	70,954	21,551	346,652
Fertility Rates (births per 1,000 females):					
15-19	18.5	74.2	41.4	10.1	39.7
20-24	68.3	168.2	105.5	25.9	102.6
25-29	94.9	130.7	113.0	60.8	105.5
30-34	92.8	98.1	98.2	62.3	93.3
35-44	27.7	34.3	32.7	17.7	29.5
TOTAL	53.0	86.6	69.5	33.0	63.4

* Total Includes births to mothers under age 15 years, over 45 years and of unknown age.

Source: U.S. Bureau of Census, 2000 and Office of Vital Statistics, Florida Department of Health

TABLE 3 – Broward County Births by Age of Mother, 1973 to 2003

Year	<15	15-19	20-24	25-29	30-34	35-44	45+	Unknown	TOTAL
1973	7	983	2,231	2,232	850	309	4	0	6,616
1983	36	1,528	3,833	4,277	2,469	795	3	1	12,942
1993	56	1,822	3,972	5,692	5,204	2,553	8	5	19,312
2000	49	1,850	4,320	5,734	5,942	4,133	50	2	22,080
2001	50	1,844	4,471	5,629	6,079	4,186	47	4	22,310
2002	39	1,674	4,400	5,676	6,012	4,244	49	9	22,103
2003	26	1,633	4,329	5,756	6,313	4,346	44	1	22,448

Source: Office of Vital Statistics, Florida Department of Health

TABLE 4 – Broward County Total Live Births by Zip Code, 2000-2003

Zip Code	White Non-Hispanic	Black Non-Hispanic	Hispanic	Other Races Non-Hispanic	Total Births
33004	243	394	143	15	795
33009	441	495	518	28	1,482
33019	492	22	175	15	704
33020	791	834	746	47	2,418
33021	1,175	250	631	69	2,125
33023	495	2,205	981	97	3,778
33024	1,326	530	1,273	249	3,378
33025	511	1,563	909	160	3,143
33026	576	186	387	42	1,191
33027	462	357	954	145	1,918
33028	605	247	703	132	1,687
33029	887	339	1,125	126	2,477
33060	584	1,201	504	29	2,318
33062	482	23	100	18	623
33063	1,231	401	531	127	2,290
33064	1,277	1,129	730	65	3,201
33065	1,325	693	769	104	2,891
33066	308	51	81	26	466
33067	877	84	203	72	1,236
33068	775	1,454	942	108	3,279
33069	281	514	246	34	1,075
33071	991	189	317	72	1,569
33073	1,060	129	369	112	1,670
33076	889	81	175	70	1,215
33301	225	30	49	9	313
33304	272	384	141	24	821
33305	248	80	50	7	385
33306	83	13	17	4	117
33308	577	15	110	18	720
33309	622	957	381	59	2,019
33311	152	4,624	135	21	4,932
33312	868	1,232	562	50	2,712
33313	273	3,642	320	67	4,302
33314	662	142	375	46	1,225
33315	327	79	161	17	584

Zip Code	White Non-Hispanic	Black Non-Hispanic	Hispanic	Other Races Non-Hispanic	Total Births
33316	223	35	74	15	347
33317	679	517	497	60	1,753
33319	367	1,447	382	84	2,280
33321	714	314	466	63	1,557
33322	796	295	288	88	1,467
33323	522	147	200	54	923
33324	1,133	267	485	98	1,983
33325	876	78	301	40	1,295
33326	742	55	588	72	1,457
33327	767	51	455	45	1,318
33328	735	32	187	50	1,004
33330	325	34	116	19	494
33331	573	70	326	55	1,024
33332	161	14	69	5	249
33334	585	386	481	40	1,492
33351	741	582	480	107	1,910
33441	538	598	221	33	1,390
33442	665	111	222	39	1,037

Source: Office of Vital Statistics, Florida Department of Health