

# BROWARD-by-the-NUMBERS

## Population and Housing Trends 2000-2004

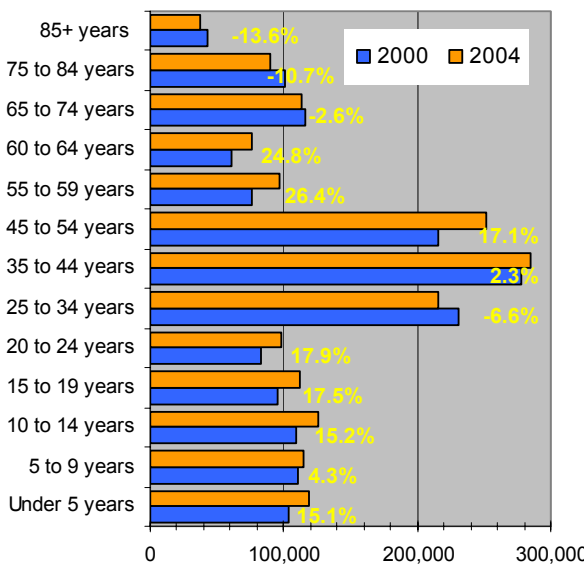
*Since the last Census in 2000, Broward County's population has grown by more than 100,000. Hispanic and Black/African-American populations have grown more than 25 percent.*

According to the 2004 American Community Survey (ACS), Broward County's population has grown from 1.62M, in 2000, to 1.73M<sup>1</sup>. Growth has been accompanied by changes in age, race/ethnicity, employment, income and housing in the County.

### Age Trends

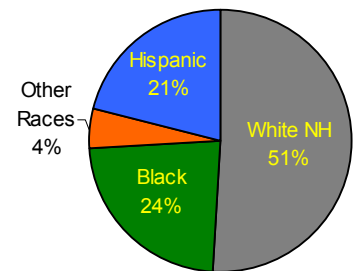
The population of children and working-age adults have increased in all age cohorts (except persons aged 25 to 34 years), but the number of senior adults has declined. This trend reflects the continued in-migration of younger families, coupled with a decline in retirees moving into Broward County.

Population By Age Group



### Racial and Ethnic Trends

Broward County has 368,223 Hispanic residents (21 percent) and 407,840 Black/African-Americans (24 percent); these two populations have grown significantly since 2000. In contrast, the White Non-Hispanic population has declined by almost 61,000, since 2000. The number of White residents is now lower than it was in 1980.



Race/Ethnicity	2000	2004	Change 2000-04	% Change
White NH	941,674	880,724	- 60,950	- 7%
Black	325,305	407,840	82,535	25%
Hispanic	271,652	368,223	96,571	36%
Other Races	84,387	77,947	- 6,440	- 8%
<b>Total Population</b>	<b>1.62 M</b>	<b>1.73M</b>	<b>111,716</b>	<b>7%</b>

The Hispanic community is diverse, with 205,228 residents from different counties in Central and South American. Between 2000 and 2004, the Cuban population grew by 36 percent to 69,374 surpassing the Puerto Rican population.

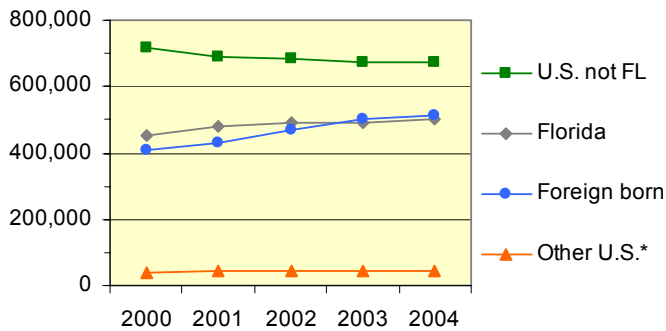
Population	2000	2004	Growth 2000-04	% Growth
Mexican	19,451	28,836	9,385	48%
Puerto Rican	54,938	64,785	9,847	18%
Cuban	50,911	69,374	18,463	36%
Other Hispanic	146,352	205,228	58,876	40%
<b>Total Hispanic</b>	<b>271,652</b>	<b>368,223</b>	<b>96,571</b>	<b>36%</b>

<sup>1</sup> This does not include persons living in group quarters which in 2000 accounted for about 20,000 persons – see note on page 2.

### Social Trends

Almost 516,000 (30 percent) of Broward County residents were not born in the United States, an increase of more than 105,000 persons, since 2000. Most of this increase was in residents born in Latin America, which grew from 294,000, in 2000, to 395,000, in 2004.

**Population by Place of Birth**



\*Born in Puerto Rico, U.S. Island areas, or born abroad to American parent(s).

Since 2000, the Non-English speaking population has grown by 45,034 (26 percent). Reflecting population growth from Latin America, there has been a 29 percent increase in persons who speak Spanish at home.

### Economic Trends <sup>2</sup>

Since 2000, the number of residents in the work force has grown more than 10 percent, which is faster than the population as a whole (7 percent), mainly due to the declining numbers of retirees in the County. The highest growth was the wholesale sector, where the number of residents working in wholesale trades grew 21 percent. Only two sectors declined: Information (from 28,000 employed residents, in 2000, to 24,000, in 2004) and Agriculture, which employs fewer than 1,300 residents countywide.

The number of self employed residents has increased significantly. In 2004, 50,568 residents were self-employed, compared to only 39,354 in 2000.

<sup>2</sup> The ACS measures employment characteristics of workers who live in Broward County (not the jobs provided by businesses located in the County).

### Income Trends

In 2004, the median household income in Broward County was \$44,799. Between 2000 and 2004, the number of households with incomes less than \$ 35,000 fell by six percent, whereas those with incomes greater than \$150,000 increased by 61 percent.

The individual poverty rate in 2004 was slightly lower than in 2000, 10.3 percent, compared to 11.5 percent. However, 13.5 percent of persons under-18 and 11.5 percent of persons aged 65 and older are below the federal poverty level. By comparison, 15.7 percent of children and 10.0 percent of seniors were in poverty in 2000.

### Housing Trends

Mortgage and rental costs rose more quickly than income during the four year period. Median monthly owner costs for households, living in single family homes with a mortgage, rose 12% from \$1,246 in 2000 to \$1,394 in 2004. The median rent increased 20 percent from \$757 to \$909. During the same time period, median household income increased by only 7.5 percent.

The most significant change in housing characteristics, between 2000 and 2004, was the increase in housing units with no phone service. The number jumped 236 percent from 10,480 to 24,716. This most likely reflects the increased usage of cell phones and internet phone service, instead of traditional land phone lines.

#### About the Data

All data used in this report are from the U.S. Bureau of Census, Census 2000 or the American Community Survey (ACS), 2004.

The ACS is a nationwide survey published annually by the U.S. Bureau of the Census. It has been designed to replace the long form in the 2010 Census. Broward County was one of the original test sites used in development of the ACS.

ACS data are limited to the household population and exclude persons living in institutions, college dormitories, and other group quarters, unlike the decennial censuses. In 2000, 19,924 Broward County residents (1.2 percent) lived in group quarters (Census 2000). ACS data are based on a sample and are subject to sampling variability. Additional information about the accuracy of ACS data and the survey methodology can be found on the Census Bureau's website at <http://www.census.gov/acs/www/>.

Broward-by-the-Numbers is a publication from

Dept. of Urban Planning and Redevelopment  
 Planning Services Division  
 115 South Andrews Ave., Room 329K  
 Fort Lauderdale, FL 33301

phone: (954) 357-6634  
 email: [planstats@broward.org](mailto:planstats@broward.org)  
[www.broward.org/urbanplanning.htm](http://www.broward.org/urbanplanning.htm)



Broward County Board of County Commissioners  
 Josephus Eggelleton, Jr.  
 Ben Graber  
 Sue Gunzburger  
 Kristin D. Jacobs  
 Ilene Lieberman  
 John E. Rodstrom, Jr.  
 James A. Scott  
 Diana Wasserman-Rubin  
 Lois Wexler

## TECHNICAL APPENDIX

**TABLE 1 – Broward County Population by Age, 2000- 2004**

<b>Age</b>	<b>2000</b>	<b>2004</b>	<b>Change 2000-04</b>	<b>Percent Change</b>
Under 5 years	103,041	118,549	15,508	15.1%
5 to 9 years	110,142	114,930	4,788	4.3%
10 to 14 years	109,132	125,754	16,622	15.2%
15 to 19 years	95,161	111,828	16,667	17.5%
20 to 24 years	82,834	97,626	14,792	17.9%
25 to 34 years	230,864	215,546	-15,318	-6.6%
35 to 44 years	278,547	284,954	6,407	2.3%
45 to 54 years	215,086	251,856	36,770	17.1%
55 to 59 years	76,548	96,725	20,177	26.4%
60 to 64 years	60,554	75,570	15,016	24.8%
65 to 74 years	116,641	113,658	-2,983	-2.6%
75 to 84 years	101,417	90,528	-10,889	-10.7%
85+ years	43,051	37,210	-5,841	-13.6%
<b>Total population</b>	<b>1,623,018</b>	<b>1,734,734</b>	<b>111,716</b>	<b>6.9%</b>
Median age (years)	37.8	38.0		

Sources: U.S. Bureau of Census, Census 2000 and American Community Survey (ACS), 2004.

**TABLE 2 – Broward County Population by Race and Hispanic Origin, 2000- 2004**

<b>Race/Ethnicity</b>	<b>2000</b>	<b>2004</b>	<b>Change 2000-04</b>	<b>Percent Change</b>
<b>Hispanic (of any race)</b>	<b>271,652</b>	<b>368,223</b>	<b>96,571</b>	<b>35.5%</b>
Mexican	19,451	28,836	9,385	48.2%
Puerto Rican	54,938	64,785	9,847	17.9%
Cuban	50,911	69,374	18,463	36.3%
Other Hispanic or Latino	146,352	205,228	58,876	40.2%
<b>Not Hispanic</b>	<b>1,351,366</b>	<b>1,366,511</b>	<b>15,145</b>	<b>1.1%</b>
White alone	941,674	880,724	-60,950	-6.5%
Black/African American alone	325,305	407,840	82,535	25.4%
American Indian or Alaska Native alone	2,934	3,794	860	29.3%
Asian alone	36,049	50,207	14,158	39.3%
Native Hawaiian and Other Pacific Islander alone	767	818	51	6.6%
Some other race alone	6,472	6,392	-80	-1.2%
Two or more races	38,165	16,736	-21,429	-56.1%
<b>Total population</b>	<b>1,623,018</b>	<b>1,734,734</b>	<b>111,716</b>	<b>6.9%</b>

Sources: U.S. Bureau of Census, Census 2000 and American Community Survey (ACS), 2004.

**TABLE 3 – Broward County Residents by Nativity and Citizenship, 2000-2004**

Place of Birth	2000	2004	Change 2000-04	Percent Change
<b>Total population</b>	<b>1,623,018</b>	<b>1,734,734</b>	<b>111,716</b>	<b>6.9%</b>
<b>Native:</b>	1,212,631	1,219,110	6,479	0.5%
Born in Florida	453,300	504,758	51,458	11.4%
Born in U.S. in different state	718,537	671,388	-47,149	-6.6%
Born in Puerto Rico, U.S. Island areas, or born abroad to American parent(s)	40,794	42,964	2,170	5.3%
<b>Foreign born:</b>	<b>410,387</b>	<b>515,624</b>	<b>105,237</b>	<b>25.6%</b>
Naturalized citizen	183,641	228,779	45,138	24.6%
Not a citizen	226,746	286,845	60,099	26.5%
<b>Foreign-born population by region of birth reported:</b>	<b>410,379</b>	<b>515,624</b>	<b>105,245</b>	<b>25.6%</b>
Europe	57,880	53,383	-4,497	-7.8%
Asia	31,436	39,786	8,350	26.6%
Africa	5,782	4,743	-1,039	-18.0%
Oceania	620	635	15	2.4%
Latin America	294,010	394,901	100,891	34.3%
Northern America	20,651	22,176	1,525	7.4%

Sources: U.S. Bureau of Census, Census 2000 and American Community Survey (ACS), 2004.

**TABLE 4 – Broward County Residents in Labor Force by Industry Type, 2000-2004**

Industry (1)	2000	2004	Change 2000-2004	Percent Change
Agriculture, forestry, fishing and hunting, and mining	2,373	1,279	-1,094	-46.1%
Information	27,924	24,177	-3,747	-13.4%
Public administration	33,988	34,187	199	0.6%
Manufacturing	50,521	50,981	460	0.9%
Retail trade	106,804	107,842	1,038	1.0%
Transportation and warehousing, and utilities	42,891	46,863	3,972	9.3%
Educational, health, and social services	134,872	152,938	18,066	13.4%
Professional, scientific, management, administrative, and waste management services	88,604	101,002	12,398	14.0%
Finance, insurance, real estate, and rental and leasing	69,046	79,469	10,423	15.1%
Construction	56,496	66,108	9,612	17.0%
Arts, entertainment, recreation, accommodation, and food services	69,535	81,952	12,417	17.9%
Other services (except public administration)	41,307	48,834	7,527	18.2%
Wholesale trade	34,578	42,048	7,470	21.6%
<b>All Industries</b>	<b>758,939</b>	<b>837,680</b>	<b>78,741</b>	<b>10.4%</b>

(1) Census 2000 and the ACS measure employment characteristics of workers who live in Broward County (not the jobs provided by businesses located in the County).

Sources: U.S. Bureau of Census, Census 2000 and American Community Survey (ACS), 2004.