

BROWARD-by-the-NUMBERS

The Haitian/Creole-Speaking Population

More than 62,000 Broward County residents have Haitian ancestry, and 53,000 speak French-Creole, including 14,000 children.



The Haitian Population

Despite its local significance, it is often difficult to quantify the size of the Haitian population in Broward County. This paper brings together some of the available data from Census 2000 and other sources to give an overview of our Haitian residents.

According to Census 2000, 62,342 residents have Haitian ancestry, representing 3.8% of Broward County's population. This number includes persons born in Haiti and those born in the United States.

Haitian Immigrants

The Haitian-born population has grown significantly over the past two decades. In 1980, only 1,849 Haitians lived in Broward County, whereas in 2000, 47,445 residents reported Haiti as their birth place. Haitians are the second largest population of first-generation immigrants living in Broward.

	Foreign-born residents	Persons born in Haiti	% Haitian
1980	113,339	1,849	1.6%
1990	198,274	18,510	9.3%
2000	410,387	47,445	11.6%

Source: U.S. Bureau of Census

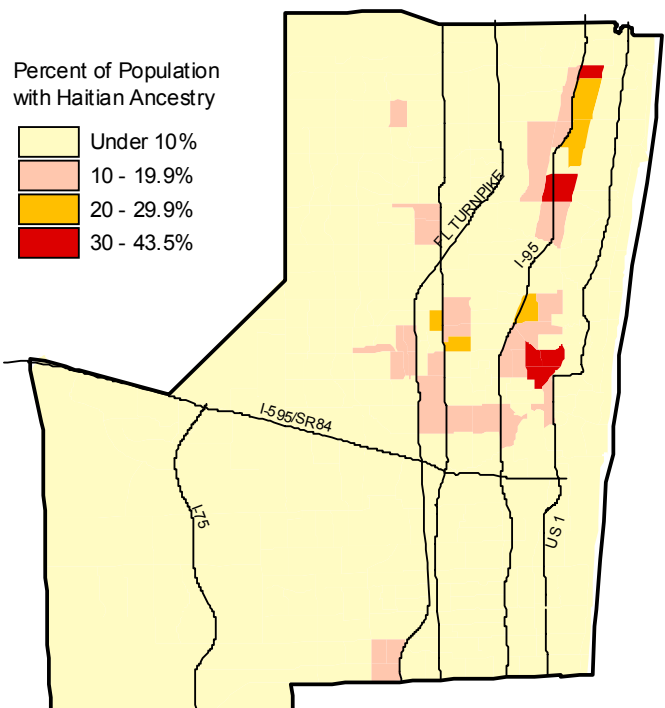
Immigration and Naturalization Service records show that in 2000, 2,550 Haitian citizens emigrated to Broward County. (In addition, others may have been admitted legally as temporary residents or may have moved into Broward after initially living in another county.)

Fiscal Year	Haitian Immigrants	Percent
1996	1,659	16.1%
1997	1,476	13.8%
1998	1,496	15.0%
1999	1,535	18.2%
2000	2,550	15.2%

Source: Immigration and Naturalization Service (INS)

Where do the Haitians Live?

Like many immigrant groups, the Haitian population is locally concentrated in specific geographic areas within Broward County.



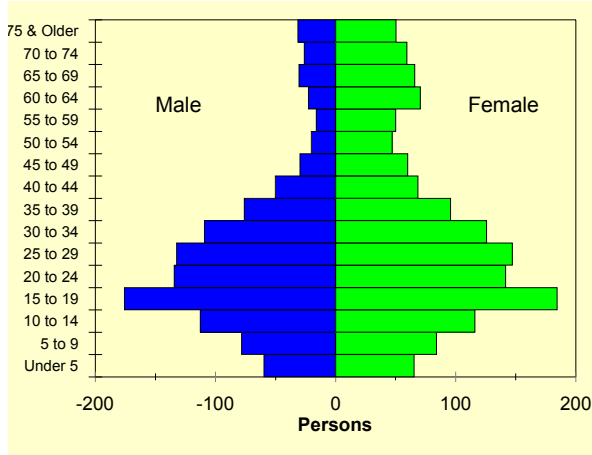
Source: U.S. Bureau of Census, 2000

Population by Age

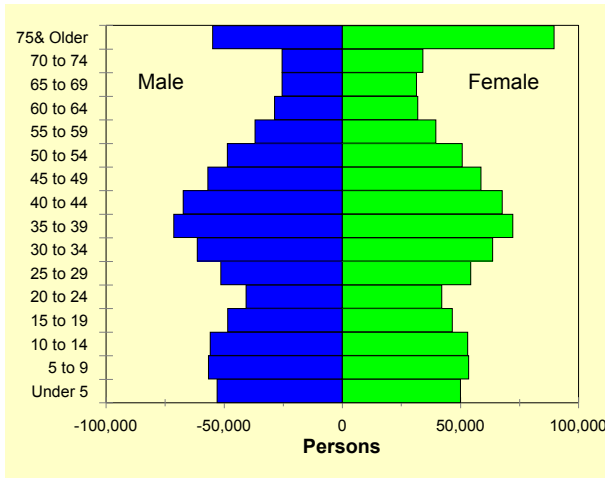
The age structure of the Haitian immigrant population differs from that of Broward County as a whole. Comparison between the two population pyramids shows that a large percentage of Haitian immigrants are aged 10 to 24 years, and most are under the age of 45.

Conversely, Broward County’s population has a much higher percentage of persons over the age of 75. Also the “baby boom” generation (ages 30 to 50) and their children (ages 0 to 19) comprise a large portion of the total population.

Haitians moving into Broward in 2000, by Age



Broward County Population 2000, by Age



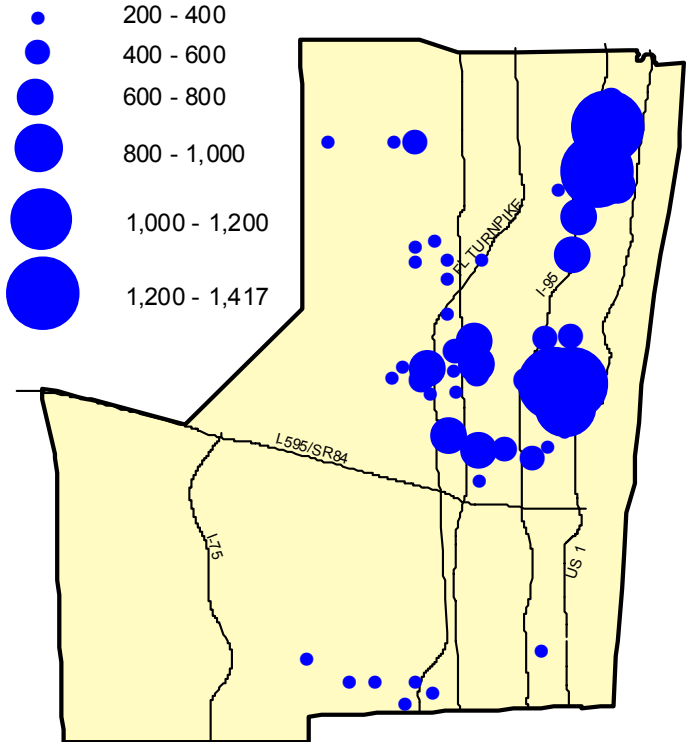
Creole Language

French-Creole is the second most popular foreign language spoken locally. Spanish is first and French, a language also spoken by Haitians, is third. More than 53,000 Broward County residents speak French-Creole at home (3.5%). Many of these persons also speak English.

Age	Persons Speaking French-Creole at home
5-17 years	14,640
18+ years	38,704
Total	53,344

Source: U.S. Bureau of Census.

Creole-Speaking Adults



Source: U.S. Bureau of Census, 2000

Sources: INS and U.S. Bureau of Census.

Broward-by-the-Numbers is a publication from

Department of Planning and Environmental Protection
Planning Services Division
 115 South Andrews Ave., Room 329K
 Fort Lauderdale, FL 33301

phone: (954) 357-6612
 email: planstats@broward.org
www.broward.org/cnpd.htm



Broward County Board of County Commissioners

- Josephus Eggelletion, Jr.
- Ben Graber
- Sue Gunzburger
- Kristin D. Jacobs
- Ilene Lieberman
- Lori Nance Parrish
- John E. Rodstrom, Jr.
- James A. Scott
- Diana Wasserman-Rubin

TECHNICAL APPENDIX

TABLE 1 - Census Tracts with 200+ Residents of Haitian Ancestry

Tract	Persons with Haitian Ancestry	Percent Haitian ⁽¹⁾	Tract	Persons with Haitian Ancestry	Percent Haitian ⁽¹⁾
102.00	219	3.3%	503.05	468	6.2%
103.04	1,161	37.2%	503.06	703	21.1%
107.01	872	16.6%	503.07	1,041	18.1%
107.02	1,986	28.6%	503.08	941	27.1%
108.00	271	3.7%	504.00	354	4.1%
203.02	393	5.5%	506.00	225	2.6%
203.05	290	2.7%	507.01	1,003	24.4%
203.08	705	11.8%	507.02	619	10.5%
203.10	472	4.3%	509.00	925	12.9%
203.13	376	5.4%	601.05	305	4.4%
204.04	758	10.6%	601.06	282	3.5%
204.05	361	7.8%	601.08	389	5.4%
204.07	449	5.9%	602.03	538	10.4%
204.08	780	6.9%	602.06	248	4.9%
205.01	739	13.0%	602.08	495	9.0%
205.02	478	6.1%	602.09	443	16.8%
302.00	755	7.0%	603.02	851	13.7%
303.01	618	17.9%	603.03	997	16.0%
303.02	1,863	26.6%	603.04	656	19.9%
304.02	1,180	31.2%	604.01	363	8.1%
305.00	473	12.9%	604.02	494	8.2%
308.01	1,111	18.3%	604.03	651	13.6%
310.00	313	3.9%	605.01	257	3.8%
407.00	265	3.4%	608.00	1,185	14.5%
408.01	1,799	36.7%	805.00	303	4.9%
408.02	1,746	32.3%	903.00	209	2.4%
409.01	747	16.7%	904.02	226	2.7%
409.02	705	19.7%	915.00	250	4.8%
412.00	219	5.8%	918.00	377	4.5%
415.00	222	7.1%	1003.00	352	5.8%
416.00	315	6.1%	1004.00	242	6.5%
417.00	1,715	43.5%	1008.02	432	6.5%
425.00	328	12.0%	1103.15	545	4.3%
426.00	529	9.4%	1103.16	344	3.6%
427.00	632	11.2%	1103.17	488	2.4%
428.00	860	12.9%	1103.19	301	5.6%
429.00	1,094	17.3%	1103.20	622	8.5%
430.00	513	6.2%	1104.02	643	14.7%
502.02	246	2.8%	1104.03	578	10.7%
503.01	1,340	18.4%	1104.04	554	10.1%
503.03	267	4.6%	1105.00	576	7.2%

(1) Includes persons reporting more than one ancestry

Source: U.S. Bureau of Census, 2000

TABLE 2 - Haitian Immigrants Admitted as Permanent Residents by Age and Sex, 2000

Age Cohort	Haitians Admitted to United States				Haitians moving to Broward County (1)		
	Total Persons	Percent of Total by Age	Percent Male by Age	Percent Female by Age	Total Persons	Males	Females
Total	22,362		43.6%	56.4%	2,550	1,111	1,439
Under 5	1,098	4.9%	47.7%	52.3%	125	60	65
5 to 9	1,424	6.4%	48.2%	51.8%	162	78	84
10 to 14	2,004	9.0%	49.3%	50.7%	229	113	116
15 to 19	3,162	14.1%	48.8%	51.2%	361	176	185
20 to 24	2,421	10.8%	48.7%	51.3%	276	134	142
25 to 29	2,452	11.0%	47.3%	52.7%	280	132	147
30 to 34	2,062	9.2%	46.5%	53.5%	235	109	126
35 to 39	1,507	6.7%	44.3%	55.7%	172	76	96
40 to 44	1,042	4.7%	42.2%	57.8%	119	50	69
45 to 49	787	3.5%	32.9%	67.1%	90	30	60
50 to 54	590	2.6%	29.8%	70.2%	67	20	47
55 to 59	579	2.6%	24.2%	75.8%	66	16	50
60 to 64	818	3.7%	24.3%	75.7%	93	23	71
65 to 69	845	3.8%	31.6%	68.4%	96	30	66
70 to 74	750	3.4%	30.5%	69.5%	86	26	59
75 to 79	480	2.2%	38.8%	61.3%	55	21	34
80 and Older	239	1.1%	37.7%	62.3%	27	10	17
Unknown Age	102	0.5%	48.0%	52.0%	12	6	6

(1) This table assumes the local Haitian immigrant population has the same age/sex distribution as the national immigrant population. Total population (2,550) equals the number of legal immigrants moving into Fort Lauderdale Metropolitan Statistical Area in 2000, according to INS records. The age/sex distribution of Broward County's Haitian population is derived by pro-rating the local total into age/sex cohorts based on the distribution within the population admitted to the United States in 2000, as shown by percentages.

Source: Immigration and Naturalization Service (INS), 2000.

TABLE 3 - Language Spoken at Home (by Persons 5 years and over)

Ran k	Language (1)	Total Persons Speaking Language at Home	Persons Aged 5-17	Persons Aged 18+
1	English	1,083,041	198,834	884,207
2	Spanish/Spanish Creole	248,207	50,271	197,936
3	French Creole	53,344	14,640	38,704
4	French	28,333	2,849	25,484
5	Portuguese/Portuguese Creole	17,356	3,037	14,319
6	Italian	13,573	538	13,035

(1) Languages spoken at home by more than 10,000 residents-, aged 5 and over, in Broward County.

Source: U.S. Bureau of Census, 2000